

# 11294A FOAM GENERATOR KIT

Nilfisk FM400 L  
Nilfisk Alto Spintec 443  
Alto Spintec 443

## CONTENTS OF KIT

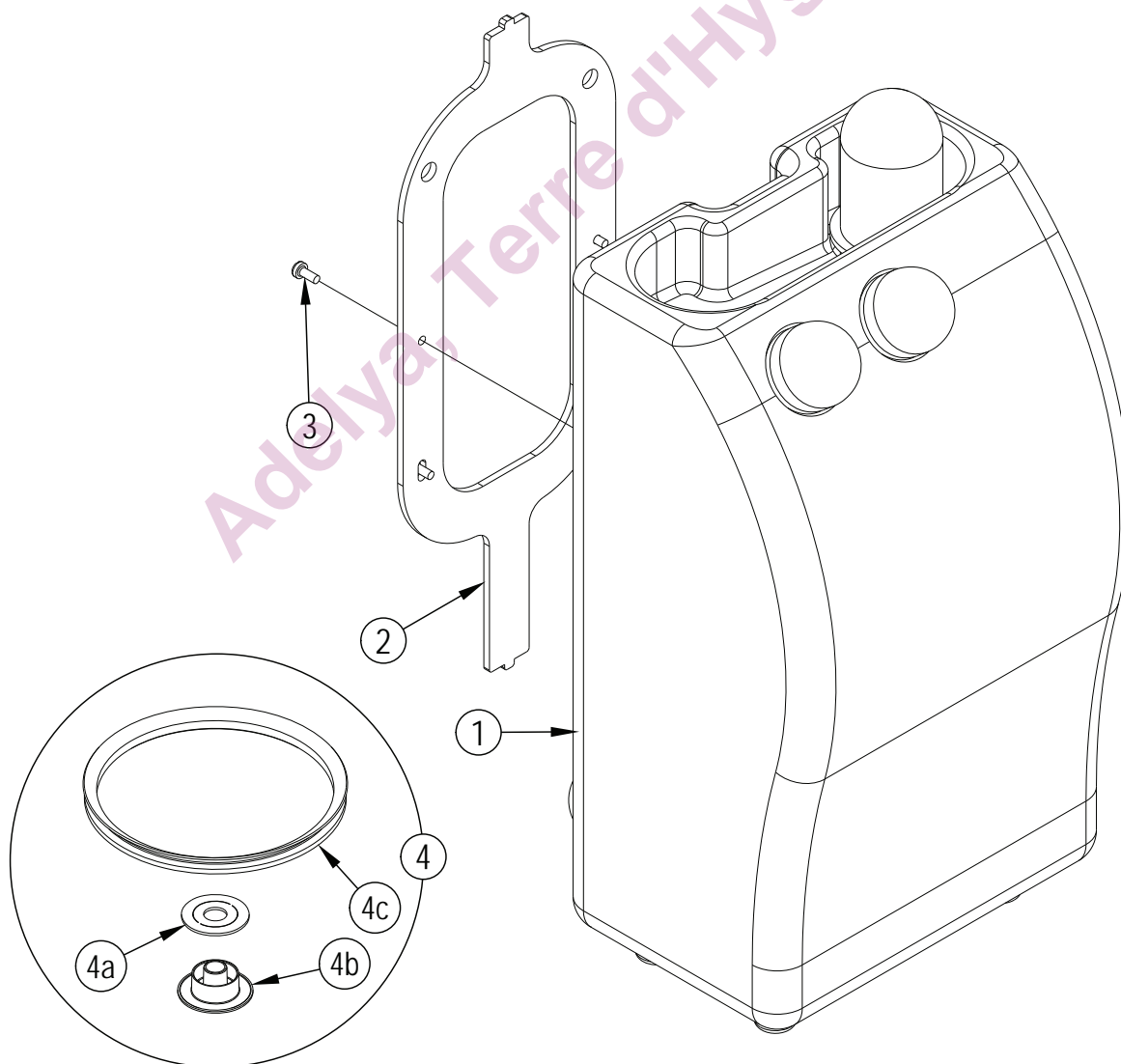
ITEM	PART NO.	QTY	DESCRIPTION
	56090074	1	Instruction Sheet
1		1	Foam Generator
2	60459A	1	Bracket Foam Generator
3#		4	Scr M5- .8 X 16 Fil Cross Rec
4#	56382020	1	Transmission Seal Kit
<b>SERVICE PARTS</b>			
[ ]#	VF464041	1	Fill Cap Asm
[ ]#	VF14227	1	O-Ring (for Fill Cap)
[ ]#	VF46422-6	1	Micro Switch
[ ]#	VF46454	1	Intake Filter
[ ]#	VF46435	1	Drain Filter
[ ]#	YQ11000	1	Compressor
[ ]#	VF46468	1	Cooling Fan
[ ]#	VF46422-8	1	Valve Body

[ ] = Not Shown

# = Revised or new since last update

## WARNING!

READ ALL INSTRUCTIONS BEFORE SERVICING OR OPERATING.



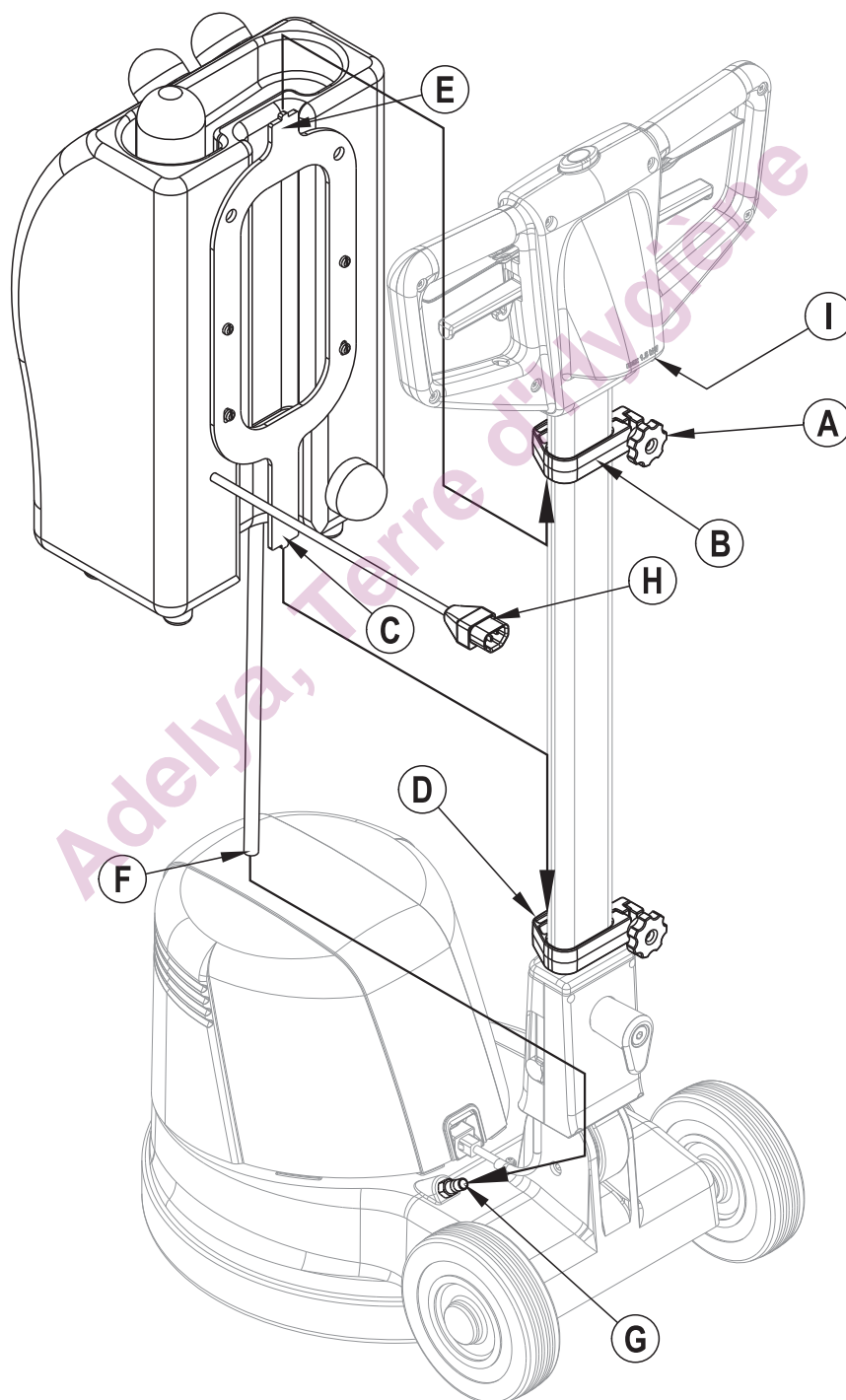
# INSTALLATION INSTRUCTIONS

## **⚠ WARNING!**

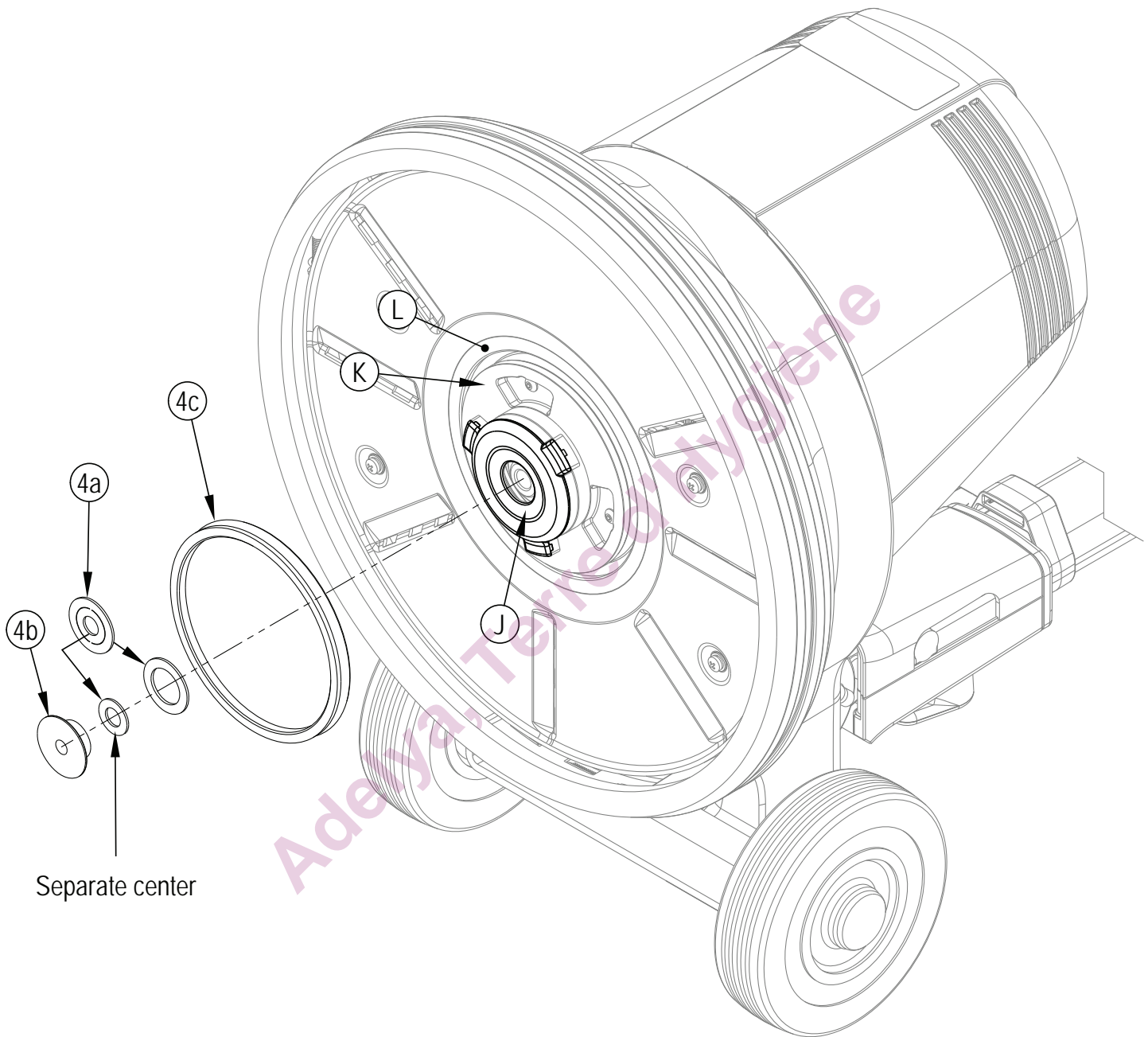
DISCONNECT POWER BEFORE SERVICING.

- 1 See Figure 1. Loosen the top Accessory Clamp Knob (A) and slide the Accessory Clamp (B) up.
- 2 Insert the bottom Tab (C) of the bracket into the top of the bottom Accessory Clamp (D). While holding the Foam Generator in place slide the top Accessory Clamp (B) back down over the top Tab (E) of the bracket. Tighten Knob (A).
- 3 Connect Tube (F) to the Hose Barb (G) on the base.
- 4 Plug the Power Cord (H) from the Foam Generator into the Accessory Plug (I).

FIGURE 1



- 5 See Figure 2. Install the Felt Seal (4a) into the Driver Seal Cage (4b). **NOTE:** The middle of the Felt Seal (4a) must be separated and installed in the middle of the Driver Seal Cage (4b). The Felt Seal (4a) has adhesive to hold it in place.
- 6 Install the Driver Seal Cage (4b) onto spindle by gently tapping with a hammer until it makes contact with the bottom of the black brush driver (J).
- 7 Install Seal (4c) between Driver (K) and Bottom Cover (L). **NOTE:** The Seal (4c) should be flush with the Bottom Cover (L).

**FIGURE 2**

## ⚠ WARNING!

- THIS PRODUCT MUST ONLY BE USED WITH THE Nilfisk FM400 or Nilfisk Alto Spintec 443.
- This product must only be used by properly trained individuals.
- Disconnect the electrical source before servicing. Inspect electrical cable regularly.
- This product must only be used as intended.
- Use and store indoors only.
- Do not use this product if it develops a leak, is malfunctioning, or is damaged.
- Service must only be performed by qualified personnel.
- Save these instructions.

## OPERATION INSTRUCTIONS

- 1 See Figure 3. Push the Vent Button (A) to relieve any built up pressure from the tank.
- 2 Remove Fill Cap (B) to fill the tank with foam chemical and water mixed according to the ratio on the chemical bottle.
- 3 Turn Knob (C) counter clockwise to maximum volume setting. Start polisher once foam appears in brush. Turn Knob clockwise to reduce volume.
- 4 To stop foam turn Knob (C) to 0.

**NOTE:** Remove aerating device from Knob (D) when using strong foaming detergents or detergents mixed in strong concentrations. This will improve cleaning, prevent overload to foam system and foam entry into belt chamber.

## AFTER USE

- 1 Move the machine to a designated "DISPOSAL SITE".
- 2 Push the Vent Button (A) to relieve any built up pressure from the tank. Remove the Fill Cap (B).
- 3 Remove the Drain Cap (E) from the rear of the tank and allow the tank to drain. Once empty flush the tank with clean water.

FIGURE 3

